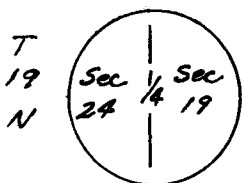


CERTIFIED LAND CORNER RECORDATION

R-70W | R69W

DESCRIPTION OF CORNER EVIDENCE FOUND, AND ORIGINAL RECORD (If known)

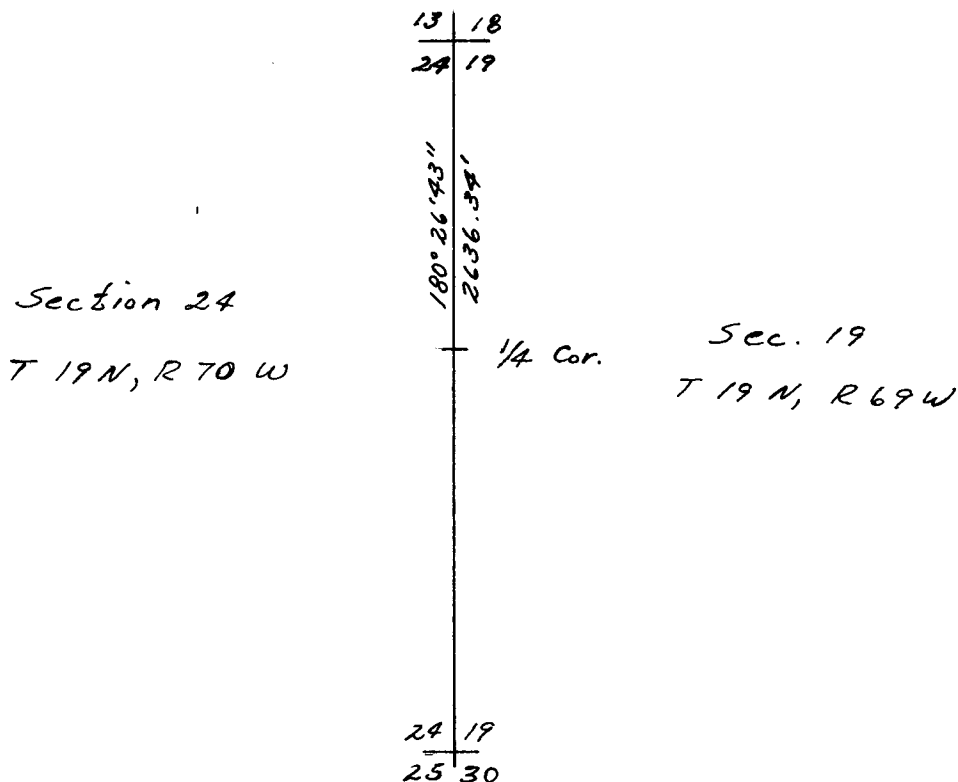
Found Gray stone 24" x 14" x 4" with 1/4 in west face and set in mound of stone. Original Monument described as a limestone 21" x 12" x 6".



DESCRIPTION OF MONUMENT AND ACCESSORIES ESTABLISHED TO PERPETUATE THE ORIGINAL LOCATION OF THIS CORNER:

Set a No. 5 Rebar with an Aluminum Cap at west face of stone as corner monument. Left stone in place as reference monument.

SKETCH, WITH COURSE AND DISTANCE TO ADJACENT CORNER IF DETERMINED IN THIS SURVEY. (May Sketch or Paste Reproduction on Reverse Side.)



I, Edward C. Fry certify that I have carefully performed or reviewed the work done on the diagrammed corner as reported on this recordation form and approve the same.

Edward C. Fry
Signature of Surveyor

P.E./L.S. 662
Registration No.

STATE OF WYOMING,
Office of Clerk and Recorder,
County of _____

594257

This "corner record" was filed for record on the OCT 2 1980 day of _____, 19____, was noted on the cross-index plat and is assigned page No. _____, in book No. _____.

Janet C. Whitehead
County Official

Cross Index No. _____	T. _____	R. _____	Mer. _____
Photographed.....	P-1	T. 19	R. 69 Mer.
Indexed.....	_____	T. _____	R. _____ Mer.
Posted.....	_____	T. _____	R. _____ Mer.
Assessor.....	_____	T. _____	R. _____ Mer.